



**Flat 7 Abbots Court, Sale, M33 2DB**

£200,000

[www.jordanfishwick.co.uk](http://www.jordanfishwick.co.uk)







# jordan fishwick

- Ground Floor Apartment
- Popular Residential Location
- Close to Dane Road Metrolink
- £131pcm Service Charge
- Council Tax Band B
- Two Bedrooms
- NO CHAIN
- Ideal Investment
- Leasehold
- EPC Rating D

Two Double Bedroom GROUND FLOOR apartment situated in the popular Abbots Court just off Mornington Road. Being sold with NO CHAIN, this property is ready to move in to, currently comprising: private entrance hall with store cupboard, modern fitted kitchen with space for appliances and gas combi boiler, three piece bathroom suite, lounge with views of the communal gardens and two well proportioned bedrooms. Benefitting from newly fitted carpets, blinds and doors!

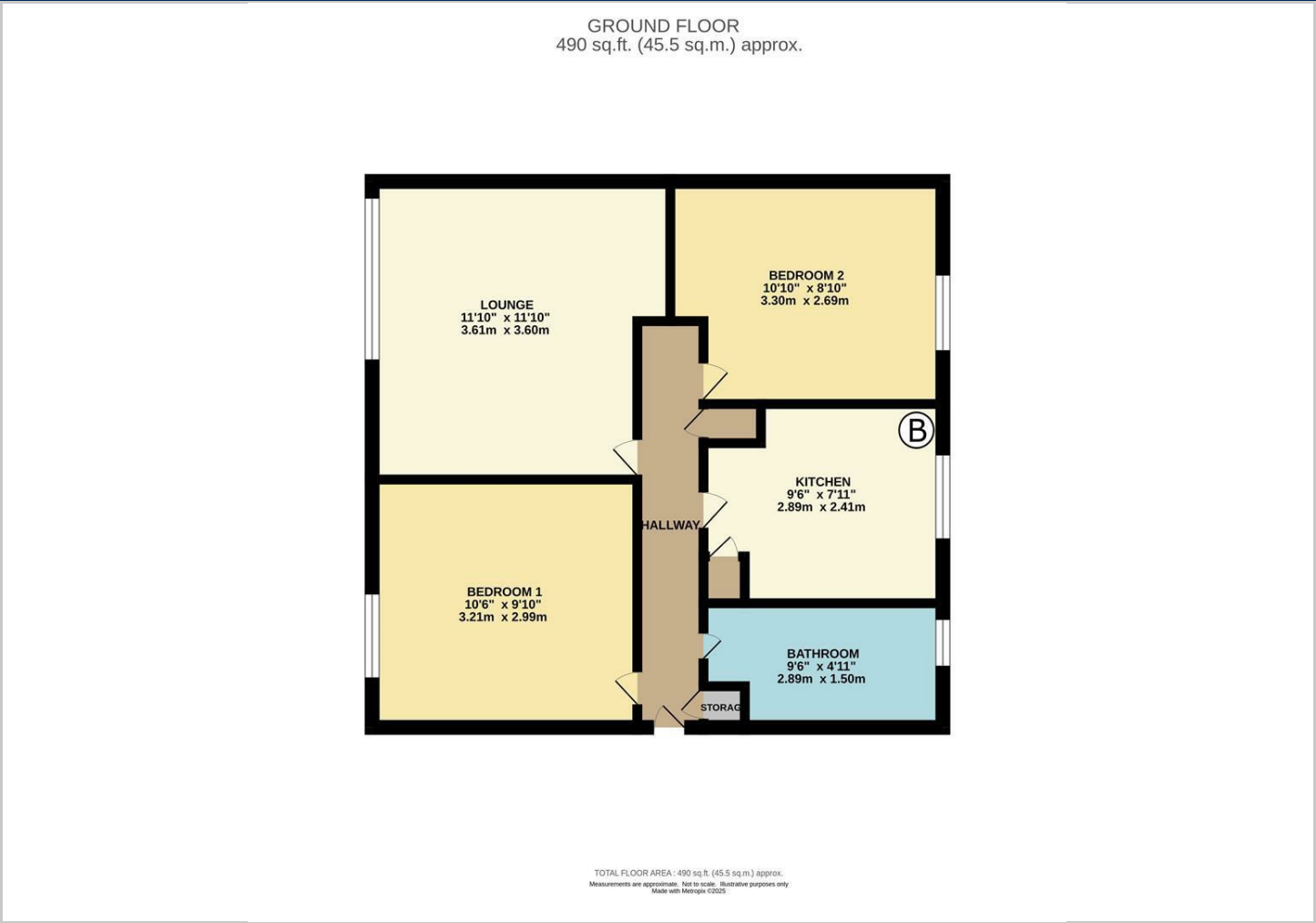
EPC Rating D. Council Tax Band B. Leasehold.







Floor Plans

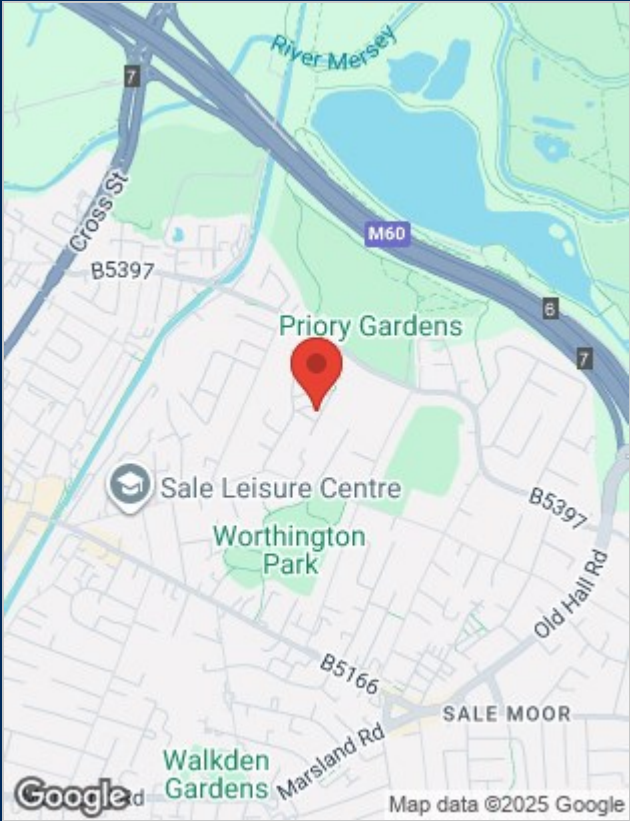


Viewing

Please contact our Sale Office on 0161 962 2828 if you wish to arrange a viewing appointment for this property or require further information.

The particulars are set out as a general outline only for the guidance of intended purchasers or lessees, and do not constitute, any part of a contract. Nothing in these particulars shall be deemed to be a statement that the property is in good structural condition or otherwise nor that any of the services, appliances, equipment or facilities are in good working order. Purchasers should satisfy themselves of this prior to purchasing.

Location Map



Energy Performance Graph

